



TEST REPORT

REPORT No.: **DTIBW20210743-1R**

Date: 2021-04-29

Page 1 of 22

Applicant Company Name: Shenzhen Huafurui Technology Co., Ltd.

Applicant Company Address: Unit 1401 &1402, 14/F, Jinqi zhigu mansion (No. 4 building of Chongwen Garden), Crossing of the Liuxian street and Tangling road, Taoyuan street, Nanshan district, Shenzhen,P.R. China

The following sample(s) was/were submitted and identified on behalf of the client as:

Sample Name : Smart watch
 Model No. : C7
 Trademark : CUBOT/HAFURY
 Sample Receiving Date : April 21, 2021; April 28, 2021
 Testing Period : From April 21, 2021 to April 29, 2021
 Testing Period : From to
 Results : Please refer to next page(s).

Summary of Test Results:

TEST REQUEST

A EU RoHS Directive 2011/65/EU and its amendment directives 2015/863/EU ([RoHS 2.0](#))

CONCLUSION

Pass

Shenzhen Deesev Testing International Corp

Approved by: Tommy Jiang
lab manager

This document is issued by the Company subject to its General Conditions of service of service printed overleaf, available on request for electronic format documents, subject to terms and conditions for electronic documents is drawn to the limitation of liability indemnification and jurisdiction issues defined therein. any holder of this document is advised that information contained herein reflects the company's findings at the time of its intervention only and within the limits of client's instructions. if any, the company's sole responsibility is to its client and this document does not exonerate parties to a transaction from exercising all their rights and obligations under the transaction documents. this document cannot be reproduced except in full, without prior written approval of the company. any unauthorized alteration, forgery or falsification of the content or appearance of this document is unlawful and offenders may be prosecuted to the fullest extent of the law, unless otherwise stated the results shown in this test report refer only to the sample(s) tested.





TEST REPORT

REPORT No.: **DTIBW20210743-1R**

Date: 2021-04-29

Page 2 of 22

Results:

1. EU RoHS Directive 2011/65/EU and its amendment directives on XRF

Test method: With reference to IEC 62321-3-1:2013, Screening by X-ray Fluorescence Spectroscopy (XRF)

Seq. No.	Tested Part(s)	Results				
		Pb	Cd	Hg	Cr	Br
1	Black Plastic Case	BL	BL	BL	BL	BL
2	Gold Metal Terminal	BL	BL	BL	BL	N/A
3	Silver Magnet	BL	BL	BL	BL	BL
4	Black Coating	BL	BL	BL	BL	BL
5	Transparent Plastic Sheet	BL	BL	BL	BL	BL
6	Gray Coating	BL	BL	BL	BL	BL
7	Plastic Frame Substrate	BL	BL	BL	BL	BL
8	Black Electroplating	BL	BL	BL	BL	N/A
9	Metal Knob Substrate	BL	BL	BL	BL	N/A
10	Silver Metal Spring	BL	BL	BL	BL	N/A
11	Silver Metal Circlip	BL	BL	BL	BL	N/A
12	Touch Screen Glass	BL	BL	BL	BL	BL
13	Display Screen Glass	BL	BL	BL	BL	BL
14	FPC	BL	BL	BL	BL	BL
15	LED	BL	BL	BL	BL	BL
16	Silver Plastic Patch	BL	BL	BL	BL	BL
17	White Plastic Patch	BL	BL	BL	BL	BL
18	Transparent Plastic Sheet	BL	BL	BL	BL	BL
19	White Plastic Sheet	BL	BL	BL	BL	BL
20	Black Plastic Stickers	BL	BL	BL	BL	BL

This document is issued by the Company subject to its General Conditions of service of service printed overleaf, available on request for electronic format documents, subject to terms and conditions for electronic documents is drawn to the limitation of liability indemnification and jurisdiction issues defined therein. any holder of this document is advised that information contained herein reflects the company's findings at the time of its intervention only and within the limits of client's instructions. if any, the company's sole responsibility is to its client and this document does not exonerate parties to a transaction from exercising all their rights and obligations under the transaction documents. this document cannot be reproduced except in full, without prior written approval of the company. any unauthorized alteration, forgery or falsification of the content or appearance of this document is unlawful and offenders may be prosecuted to the fullest extent of the law, unless otherwise stated the results shown in this test report refer only to the sample(s) tested.





TEST REPORT

REPORT No.: **DTIBW20210743-1R**

Date: 2021-04-29

Page 3 of 22

Seq. No.	Tested Part(s)	Results				
		Pb	Cd	Hg	Cr	Br
21	White Plastic Frame	BL	BL	BL	BL	BL
22	Black Rubber Belt	BL	BL	BL	BL	BL
23	Black Rubber Ring	BL	BL	BL	BL	BL
24	Silver Metal Frame	BL	BL	BL	X	N/A
25	Silver Metal Needle	BL	BL	BL	X	N/A
26	Silver Metal Shaft	BL	BL	BL	X	N/A
27	PCB	BL	BL	BL	BL	X
28	Solder Point	BL	BL	BL	BL	N/A
29	Black Ceramic Body Chip	BL	BL	BL	BL	BL
30	Patch Resistor	BL	BL	BL	BL	BL
31	Multiplayer Ceramic Chip Capacitors	BL	BL	BL	BL	BL
32	Triode	BL	BL	BL	BL	BL
33	Black Plastic Cover	BL	BL	BL	BL	BL
34	Black Plastic Plug-Base	BL	BL	BL	BL	BL
35	Gold Metal Terminal	BL	BL	BL	BL	N/A
36	Black Plastic Cover	BL	BL	BL	BL	BL
37	Black Plastic Plug-Base	BL	BL	BL	BL	BL
38	Silver Metal Terminal	BL	BL	BL	BL	N/A
39	Black Ceramic Body Chip	BL	BL	BL	BL	BL
40	Patch Resistor	BL	BL	BL	BL	BL

This document is issued by the Company subject to its General Conditions of service of service printed overleaf, available on request for electronic format documents, subject to terms and conditions for electronic documents is drawn to the limitation of liability indemnification and jurisdiction issues defined therein. Any holder of this document is advised that information contained herein reflects the company's findings at the time of its intervention only and within the limits of client's instructions. If any, the company's sole responsibility is to its client and this document does not exonerate parties to a transaction from exercising all their rights and obligations under the transaction documents. This document cannot be reproduced except in full, without prior written approval of the company. Any unauthorized alteration, forgery or falsification of the content or appearance of this document is unlawful and offenders may be prosecuted to the fullest extent of the law, unless otherwise stated the results shown in this test report refer only to the sample(s) tested.



Shenzhen Deesev Testing International Corp.
 深圳市德泽威技术检测有限公司

9th Flr., Building B, Feiyang Science & Technology Park, Longchang Rd. No.8, Bao'an, Shenzhen, Guangdong, China
 中国广东省深圳市宝安区隆昌路8号飞扬科技园B座9楼
 Tel: +86-755-32936716 E-mail: DTI@deesev.cn



TEST REPORT

REPORT No.: **DTIBW20210743-1R**

Date: 2021-04-29

Page 4 of 22

Seq. No.	Tested Part(s)	Results				
		Pb	Cd	Hg	Cr	Br
41	Multiplayer Ceramic Chip Capacitors	BL	BL	BL	BL	BL
42	Triode	BL	BL	BL	BL	BL
43	Patch Diode	BL	BL	BL	BL	BL
44	Crystal Oscillator	BL	BL	BL	BL	BL
45	Gold Metal Terminal	BL	BL	BL	BL	N/A
46	FPC	BL	BL	BL	BL	BL
47	Silver Metal Sheet	BL	BL	BL	X	N/A
48	Black Foam Viscose	BL	BL	BL	BL	BL
49	SMD Components	BL	BL	BL	BL	BL
50	Multiplayer Ceramic Chip Capacitors	BL	BL	BL	BL	BL
51	Patch LED	BL	BL	BL	BL	BL
52	FPC	BL	BL	BL	BL	BL
53	Silver Metal Sheet	BL	BL	BL	BL	N/A
54	Black Plastic Cover	BL	BL	BL	BL	BL
55	Black Plastic Plug-Base	BL	BL	BL	BL	BL
56	Gold Metal Terminal	BL	BL	BL	BL	N/A
57	Black Viscose Tape	BL	BL	BL	BL	BL
58	FPC	BL	BL	BL	BL	BL
59	Silver Metal Sheet	BL	BL	BL	BL	N/A
60	Yellow Plastic Sticker	BL	BL	BL	BL	BL

This document is issued by the Company subject to its General Conditions of service of service printed overleaf, available on request for electronic format documents, subject to terms and conditions for electronic documents is drawn to the limitation of liability indemnification and jurisdiction issues defined therein. Any holder of this document is advised that information contained herein reflects the company's findings at the time of its intervention only and within the limits of client's instructions. If any, the company's sole responsibility is to its client and this document does not exonerate parties to a transaction from exercising all their rights and obligations under the transaction documents. This document cannot be reproduced except in full, without prior written approval of the company. Any unauthorized alteration, forgery or falsification of the content or appearance of this document is unlawful and offenders may be prosecuted to the fullest extent of the law, unless otherwise stated the results shown in this test report refer only to the sample(s) tested.



Shenzhen Deesev Testing International Corp.
 深圳市德泽威技术检测有限公司

9th Flr., Building B, Feiyang Science & Technology Park, Longchang Rd. No.8, Bao'an, Shenzhen, Guangdong, China
 中国广东省深圳市宝安区隆昌路8号飞扬科技园B座9楼
 Tel: +86-755-32936716 E-mail: DTI@deesev.cn



TEST REPORT

REPORT No.: **DTIBW20210743-1R**

Date: 2021-04-29

Page 5 of 22

Seq. No.	Tested Part(s)	Results				
		Pb	Cd	Hg	Cr	Br
61	Black Ceramic Body Chip	BL	BL	BL	BL	BL
62	Patch Resistor	BL	BL	BL	BL	BL
63	Multilayer Ceramic Chip Capacitors	BL	BL	BL	BL	BL
64	FPC	BL	BL	BL	BL	BL
65	Silver Metal Sheet	BL	BL	BL	BL	N/A
66	Black Sticker	BL	BL	BL	BL	BL
67	Silver Metal Sheet	BL	BL	BL	BL	N/A
68	Silver Metal Components	BL	BL	BL	BL	N/A
69	Blue Plastic Wire Outer Skin	BL	BL	BL	BL	BL
70	Red Plastic Wire Outer Skin	BL	BL	BL	BL	BL
71	Wire Internal Metal Wire	BL	BL	BL	BL	N/A
72	Silver Metal Shaft	BL	BL	BL	X	N/A
73	Black Metal Screws	BL	BL	BL	BL	N/A
74	Black Plastic Wire Outer Skin	BL	BL	BL	BL	BL
75	Red Plastic Wire Outer Skin	BL	BL	BL	BL	BL
76	Wire Internal Metal Wire	BL	BL	BL	BL	N/A
77	PCB	BL	BL	BL	BL	X
78	Solder Point	BL	BL	BL	BL	N/A
79	Multilayer Ceramic Chip Capacitors	BL	BL	BL	BL	BL
80	Patch Resistor	BL	BL	BL	BL	BL

This document is issued by the Company subject to its General Conditions of service of service printed overleaf, available on request for electronic format documents, subject to terms and conditions for electronic documents is drawn to the limitation of liability indemnification and jurisdiction issues defined therein. Any holder of this document is advised that information contained herein reflects the company's findings at the time of its intervention only and within the limits of client's instructions. If any, the company's sole responsibility is to its client and this document does not exonerate parties to a transaction from exercising all their rights and obligations under the transaction documents. This document cannot be reproduced except in full, without prior written approval of the company. Any unauthorized alteration, forgery or falsification of the content or appearance of this document is unlawful and offenders may be prosecuted to the fullest extent of the law, unless otherwise stated the results shown in this test report refer only to the sample(s) tested.



Shenzhen Deesev Testing International Corp.
 深圳市德泽威技术检测有限公司

9th Flr., Building B, Feiyang Science & Technology Park, Longchang Rd. No.8, Bao'an, Shenzhen, Guangdong, China
 中国广东省深圳市宝安区隆昌路8号飞扬科技园B座9楼
 Tel: +86-755-32936716 E-mail: DTI@deesev.cn



TEST REPORT

REPORT No.: **DTIBW20210743-1R**

Date: 2021-04-29

Page 6 of 22

Seq. No.	Tested Part(s)	Results				
		Pb	Cd	Hg	Cr	Br
81	Black Ceramic Body Chip	BL	BL	BL	BL	BL
82	Yellow Plastic Sticker	BL	BL	BL	BL	BL
83	Double Faced Adhesive	BL	BL	BL	BL	BL
84	Electrode Metal Sheet	BL	BL	BL	BL	N/A
85	Aluminum Laminated Films	BL	BL	BL	BL	BL
86	Polymer Membranes	BL	BL	BL	BL	BL
87	Green Plastic Sticker	BL	BL	BL	BL	BL
88	White Plastic Sticker	BL	BL	BL	BL	BL
89	Copper Foil	BL	BL	BL	BL	N/A
90	Aluminum Foil	BL	BL	BL	BL	N/A
91	Black Soft Plastics (USB)	BL	BL	BL	BL	BL
92	Silver Metal Case (USB)	BL	BL	BL	BL	N/A
93	Internal White Plastic (USB)	BL	BL	BL	BL	BL
94	Gold Metal Needles	BL	BL	BL	BL	N/A
95	PCB	BL	BL	BL	BL	X
96	Solder Point	X	BL	BL	BL	N/A
97	Black Ceramic Body Chip	BL	BL	BL	BL	BL
98	Red Plastic Wire Outer Skin	BL	BL	BL	BL	BL
99	Black Plastic Wire Outer Skin	BL	BL	BL	BL	BL
100	Wire Internal Metal Wire	BL	BL	BL	BL	N/A
101	Black Plastic Skin	BL	BL	BL	BL	BL
102	Black Soft Plastics	BL	BL	BL	BL	BL
103	Black Plastic Case	BL	BL	BL	BL	BL
104	Silver Magnet	BL	BL	BL	BL	N/A
105	Gold Metal Terminal	X	BL	BL	BL	N/A
106	Solder Point	BL	BL	BL	BL	N/A

This document is issued by the Company subject to its General Conditions of service of service printed overleaf, available on request for electronic format documents, subject to terms and conditions for electronic documents is drawn to the limitation of liability indemnification and jurisdiction issues defined therein. any holder of this document is advised that information contained herein reflects the company's findings at the time of its intervention only and within the limits of client's instructions. if any, the company's sole responsibility is to its client and this document does not exonerate parties to a transaction from exercising all their rights and obligations under the transaction documents. this document cannot be reproduced except in full, without prior written approval of the company. any unauthorized alteration, forgery or falsification of the content or appearance of this document is unlawful and offenders may be prosecuted to the fullest extent of the law, unless otherwise stated the results shown in this test report refer only to the sample(s) tested.



Shenzhen Deesev Testing International Corp.
 深圳市德泽威技术检测有限公司

9th Flr., Building B, Feiyang Science & Technology Park, Longchang Rd.No.8,Bao'an,Shenzhen, Guangdong, China
 中国广东省深圳市宝安区隆昌路8号飞扬科技园B座9楼
 Tel: +86-755-32936716 E-mail: DTI@deesev.cn



TEST REPORT

REPORT No.: **DTIBW20210743-1R**

Date: 2021-04-29

Page 7 of 22

Remark:

- (1) Results were obtained by XRF for primary screening, and further chemical testing by ICP (for Cd, Pb, Hg), UV-Vis (for Cr(VI)) and GC-MS (for PBBs, PBDEs) are recommended to be performed, if the concentration exceeds the below warning value according to IEC 62321-3-1:2013.

Element	Unit	Non-metal	Metal	Composite Material
Cd	mg/kg	$BL \leq 70 - 3\sigma < X < 130 + 3\sigma \leq OL$	$BL \leq 70 - 3\sigma < X < 130 + 3\sigma \leq OL$	$BL \leq 50 - 3\sigma < X < 150 + 3\sigma \leq OL$
Pb	mg/kg	$BL \leq 700 - 3\sigma < X < 1300 + 3\sigma \leq OL$	$BL \leq 700 - 3\sigma < X < 1300 + 3\sigma \leq OL$	$BL \leq 500 - 3\sigma < X < 1500 + 3\sigma \leq OL$
Hg	mg/kg	$BL \leq 700 - 3\sigma < X < 1300 + 3\sigma \leq OL$	$BL \leq 700 - 3\sigma < X < 1300 + 3\sigma \leq OL$	$BL \leq 500 - 3\sigma < X < 1500 + 3\sigma \leq OL$
Cr	mg/kg	$BL \leq 700 - 3\sigma < X$	$BL \leq 700 - 3\sigma < X$	$BL \leq 500 - 3\sigma < X$
Br	mg/kg	$BL \leq 300 - 3\sigma < X$	--	$BL \leq 250 - 3\sigma < X$

Note:

- BL = Below Limit
- OL = Over Limit
- X = Inconclusive
- N/A = Not Applicable

- (2) The XRF screening test for RoHS elements – The reading may be different to the actual content in the sample be of non-uniformity composition.

This document is issued by the Company subject to its General Conditions of service of service printed overleaf, available on request for electronic format documents, subject to terms and conditions for electronic documents is drawn to the limitation of liability indemnification and jurisdiction issues defined therein. any holder of this document is advised that information contained herein reflects the company's findings at the time of its intervention only and within the limits of client's instructions. if any, the company's sole responsibility is to its client and this document does not exonerate parties to a transaction from exercising all their rights and obligations under the transaction documents. this document cannot be reproduced except in full, without prior written approval of the company. any unauthorized alteration, forgery or falsification of the content or appearance of this document is unlawful and offenders may be prosecuted to the fullest extent of the law, unless otherwise stated the results shown in this test report refer only to the sample(s) tested.





TEST REPORT

REPORT No.: **DTIBW20210743-1R**

Date: 2021-04-29

Page 8 of 22

(3) The maximum permissible limit is quoted from the document 2011/65/EU and its amendment directives 2015/863/EU:

RoHS Restricted Substances	Maximum Concentration Value (mg/kg) (by weight in homogenous materials)
Cadmium (Cd)	≤100
Lead (Pb)	≤1000
Mercury (Hg)	≤1000
Hexavalent Chromium (Cr(VI))	≤1000
Polybrominated biphenyls (PBBs)	≤1000
Polybrominate ddiphenylethers (PBDEs)	≤1000

This document is issued by the Company subject to its General Conditions of service of service printed overleaf, available on request for electronic format documents, subject to terms and conditions for electronic documents is drawn to the limitation of liability indemnification and jurisdiction issues defined therein. Any holder of this document is advised that information contained herein reflects the company's findings at the time of its intervention only and within the limits of client's instructions. If any, the company's sole responsibility is to its client and this document does not exonerate parties to a transaction from exercising all their rights and obligations under the transaction documents. This document cannot be reproduced except in full, without prior written approval of the company. Any unauthorized alteration, forgery or falsification of the content or appearance of this document is unlawful and offenders may be prosecuted to the fullest extent of the law unless otherwise stated the results shown in this test report refer only to the sample(s) tested.



Shenzhen Deesev Testing International Corp.
深圳市德泽威技术检测有限公司

9th Flr., Building B, Feiyang Science & Technology Park, Longchang Rd. No.8, Bao'an, Shenzhen, Guangdong, China
中国广东省深圳市宝安区隆昌路8号飞扬科技园B座9楼
Tel: +86-755-32936716 E-mail: DTI@deesev.cn



TEST REPORT

REPORT No.: **DTIBW20210743-1R**

Date: 2021-04-29

Page 9 of 22

2. The Test Results of Chemical Method:

Test method:

Lead, Cadmium, Mercury Content:

With reference to IEC 62321-5:2013 and IEC62321-4:2013+AMD1:2017, by acid digestion and analysis was performed by Inductively Coupled Plasma- Atomic Emission Spectrophotometer (ICP-AES)

Hexavalent Chromium Content (For metal material):

With reference to IEC 62321-7-1:2015, by boiling-water-extraction and analysis was performed by UV-visible spectrophotometer (UV-Vis)

Hexavalent Chromium Content (For non-metal material):

With reference to IEC 62321-7-2:2017, by alkaline digestion and analysis was performed by UV-visible spectrophotometer (UV-Vis)

PBBs & PBDEs Content:

With reference to IEC 62321-6:2015, by solvent extraction and analysis was performed by gas chromatographic/mass spectrometer (GC-MS)

DEHP, BBP, DBP&.DIBP content:

With reference to IEC 62321-8:2017 by solvent extraction and analysis was performed by gas chromatographic-mass spectrometer (GC-MS)

This document is issued by the Company subject to its General Conditions of service of service printed overleaf, available on request for electronic format documents, subject to terms and conditions for electronic documents is drawn to the limitation of liability indemnification and jurisdiction issues defined therein. any holder of this document is advised that information contained hereon reflects the company's findings at the time of its intervention only and within the limits of client's instructions. if any, the company's sole responsibility is to its client and this document does not exonerate parties to a transaction from exercising all their rights and obligations under the transaction documents. this document cannot be reproduced except in full, without prior written approval of the company. any unauthorized alteration, forgery or falsification of the content or appearance of this document is unlawful and offenders may be prosecuted to the fullest extent of the law. unless otherwise stated the results shown in this test report refer only to the sample(s) tested.





TEST REPORT

REPORT No.: **DTIBW20210743-1R**

Date: 2021-04-29

Page 10 of 22

1) The test results of Cr (VI)

Item	Unit	MDL	Results					Limit
			24	25	26	47	72	
Hexavalent Chromium (Cr (VI)) (Metal material)	µg/cm ²	/	Negative	Negative	Negative	Negative	Negative	#
Conclusion	/	/	Pass	Pass	Pass	Pass	Pass	/

Note:

- N.D. = Not Detected or less than MDL
- MDL = Method Detection Limit
- Negative= Sample Cr(VI) concentration is less than 0.10 µg/cm²
Positive = Sample Cr(VI) concentration is greater than 0.13 µg/cm²
- # =
Positive indicates the presence of Cr(VI) on the tested areas and the test results are considered to be incompatible with Directive 2011/65/EU (RoHS 2.0) requirement.
Negative indicates the absence of Cr(VI) on the tested areas and the test results are considered to be consistent with Directive 2011/65/EU (RoHS 2.0) requirement.
- mg/kg = ppm

2) The test results of Pb

Item	Unit	MDL	Results		Limit
			96	105	
Lead(Pb)	mg/kg	2	N.D.^	20253*	≤1000
Conclusion	/	/	Pass	Pass	/

Note:

- N.D. = Not Detected or less than MDL
- MDL = Method Detection Limit
- mg/kg = ppm
- * = the weight of lead in the copper alloy does not exceed 4%(40000ppm).
- ^ = This data is the retested data after rectification.

This document is issued by the Company subject to its General Conditions of service of service printed overleaf, available on request for electronic format documents, subject to terms and conditions for electronic documents is drawn to the limitation of liability indemnification and jurisdiction issues defined therein. any holder of this document is advised that information contained herein reflects the company's findings at the time of its intervention only and within the limits of client's instructions. if any, the company's sole responsibility is to its client and this document does not exonerate parties to a transaction from exercising all their rights and obligations under the transaction documents. this document cannot be reproduced except in full, without prior written approval of the company. any unauthorized alteration, forgery or falsification of the content or appearance of this document is unlawful and offenders may be prosecuted to the fullest extent of the law, unless otherwise stated the results shown in this test report refer only to the sample(s) tested.





TEST REPORT

REPORT No.: **DTIBW20210743-1R**

Date: 2021-04-29

Page 11 of 22

3) The test results of PBBs & PBDEs

Item	Unit	MDL	Results			Limit
			27	77	95	
Polybrominated Biphenyls (PBBs)						
Monobromobiphenyl	mg/kg	5	N.D.	N.D.	N.D.	/
Dibromobiphenyl	mg/kg	5	N.D.	N.D.	N.D.	/
Tribromobiphenyl	mg/kg	5	N.D.	N.D.	N.D.	/
Tetrabromobiphenyl	mg/kg	5	N.D.	N.D.	N.D.	/
Pentabromobiphenyl	mg/kg	5	N.D.	N.D.	N.D.	/
Hexabromobiphenyl	mg/kg	5	N.D.	N.D.	N.D.	/
Heptabromobiphenyl	mg/kg	5	N.D.	N.D.	N.D.	/
Octabromobiphenyl	mg/kg	5	N.D.	N.D.	N.D.	/
Nonabromodiphenyl	mg/kg	5	N.D.	N.D.	N.D.	/
Decabromodiphenyl	mg/kg	5	N.D.	N.D.	N.D.	/
Total content	mg/kg	/	N.D.	N.D.	N.D.	≤1000
Polybrominated Diphenylethers (PBDEs)(Mon-Deca)						
Monobromodiphenyl ether	mg/kg	5	N.D.	N.D.	N.D.	/
Dibromodiphenyl ether	mg/kg	5	N.D.	N.D.	N.D.	/
Tribromodiphenyl ether	mg/kg	5	N.D.	N.D.	N.D.	/
Tetrabromodiphenyl ether	mg/kg	5	N.D.	N.D.	N.D.	/
Pentabromodiphenyl ether	mg/kg	5	N.D.	N.D.	N.D.	/
Hexabromodiphenyl ether	mg/kg	5	N.D.	N.D.	N.D.	/
Heptabromodiphenyl ether	mg/kg	5	N.D.	N.D.	N.D.	/
Octabromodiphenyl ether	mg/kg	5	N.D.	N.D.	N.D.	/
Nonabromodiphenyl ether	mg/kg	5	N.D.	N.D.	N.D.	/
Decabromodiphenyl ether	mg/kg	5	N.D.	N.D.	N.D.	/
Total content	mg/kg	/	N.D.	N.D.	N.D.	≤1000
Conclusion	/	/	Pass	Pass	Pass	/

Note:

- N.D. = Not Detected or less than MDL
- mg/kg = ppm
- MDL = Method Detection Limit

This document is issued by the Company subject to its General Conditions of service of service printed overleaf, available on request for electronic format documents, subject to terms and conditions for electronic documents is drawn to the limitation of liability indemnification and jurisdiction issues defined therein. any holder of this document is advised that information contained herein reflects the company's findings at the time of its intervention only and within the limits of client's instructions. if any, the company's sole responsibility is to its client and this document does not exonerate parties to a transaction from exercising all their rights and obligations under the transaction documents. this document cannot be reproduced except in full, without prior written approval of the company. any unauthorized alteration, forgery or falsification of the content or appearance of this document is unlawful and offenders may be prosecuted to the fullest extent of the law. unless otherwise stated the results shown in this test report refer only to the sample(s) tested.





TEST REPORT

REPORT No.: **DTIBW20210743-1R**

Date: 2021-04-29

Page 12 of 22

4) The test results of DEHP, BBP, DBP & DIBP

Item	Unit	MDL	Results					Limit
			1	3	4	5	6	
Di-2-ethylhexyl phthalate (DEHP)	mg/kg	30	N.D.	N.D.	N.D.	N.D.	N.D.	≤1000
Benzyl-n-butyl phthalate (BBP)	mg/kg	30	N.D.	N.D.	N.D.	N.D.	N.D.	≤1000
Di-n-butyl phthalate (DBP)	mg/kg	30	N.D.	N.D.	N.D.	N.D.	N.D.	≤1000
Di-iso-butyl phthalate (DIBP)	mg/kg	30	N.D.	N.D.	N.D.	N.D.	N.D.	≤1000
Conclusion	/	/	Pass	Pass	Pass	Pass	Pass	/

Item	Unit	MDL	Results					Limit
			7	12	13	14	15	
Di-2-ethylhexyl phthalate (DEHP)	mg/kg	30	N.D.	N.D.	N.D.	N.D.	N.D.	≤1000
Benzyl-n-butyl phthalate (BBP)	mg/kg	30	N.D.	N.D.	N.D.	N.D.	N.D.	≤1000
Di-n-butyl phthalate (DBP)	mg/kg	30	N.D.	N.D.	N.D.	N.D.	N.D.	≤1000
Di-iso-butyl phthalate (DIBP)	mg/kg	30	N.D.	N.D.	N.D.	N.D.	N.D.	≤1000
Conclusion	/	/	Pass	Pass	Pass	Pass	Pass	/

Item	Unit	MDL	Results					Limit
			16	17	18	19	20	
Di-2-ethylhexyl phthalate (DEHP)	mg/kg	30	N.D.	N.D.	N.D.	N.D.	N.D.	≤1000
Benzyl-n-butyl phthalate (BBP)	mg/kg	30	N.D.	N.D.	N.D.	N.D.	N.D.	≤1000
Di-n-butyl phthalate (DBP)	mg/kg	30	N.D.	N.D.	N.D.	N.D.	N.D.	≤1000
Di-iso-butyl phthalate (DIBP)	mg/kg	30	N.D.	N.D.	N.D.	N.D.	N.D.	≤1000
Conclusion	/	/	Pass	Pass	Pass	Pass	Pass	/

This document is issued by the Company subject to its General Conditions of service of service printed overleaf, available on request for electronic format documents, subject to terms and conditions for electronic documents is drawn to the limitation of liability indemnification and jurisdiction issues defined therein. Any holder of this document is advised that information contained herein reflects the company's findings at the time of its intervention only and within the limits of client's instructions. If any, the company's sole responsibility is to its client and this document does not exonerate parties to a transaction from exercising all their rights and obligations under the transaction documents. This document cannot be reproduced except in full, without prior written approval of the company. Any unauthorized alteration, forgery or falsification of the content or appearance of this document is unlawful and offenders may be prosecuted to the fullest extent of the law unless otherwise stated the results shown in this test report refer only to the sample(s) tested.





TEST REPORT

REPORT No.: **DTIBW20210743-1R**

Date: 2021-04-29

Page 13 of 22

Item	Unit	MDL	Results					Limit
			21	22	23	27	29	
Di-2-ethylhexyl phthalate (DEHP)	mg/kg	30	N.D.	N.D.	N.D.	N.D.	N.D.	≤1000
Benzyl-n-butyl phthalate (BBP)	mg/kg	30	N.D.	N.D.	N.D.	N.D.	N.D.	≤1000
Di-n-butyl phthalate (DBP)	mg/kg	30	N.D.	N.D.	N.D.	N.D.	N.D.	≤1000
Di-iso-butyl phthalate (DIBP)	mg/kg	30	N.D.	N.D.	N.D.	N.D.	N.D.	≤1000
Conclusion	/	/	Pass	Pass	Pass	Pass	Pass	/

Item	Unit	MDL	Results					Limit
			30	31	32	33	34	
Di-2-ethylhexyl phthalate (DEHP)	mg/kg	30	N.D.	N.D.	N.D.	N.D.	N.D.	≤1000
Benzyl-n-butyl phthalate (BBP)	mg/kg	30	N.D.	N.D.	N.D.	N.D.	N.D.	≤1000
Di-n-butyl phthalate (DBP)	mg/kg	30	N.D.	N.D.	N.D.	N.D.	N.D.	≤1000
Di-iso-butyl phthalate (DIBP)	mg/kg	30	N.D.	N.D.	N.D.	N.D.	N.D.	≤1000
Conclusion	/	/	Pass	Pass	Pass	Pass	Pass	/

Item	Unit	MDL	Results					Limit
			36	37	39	40	41	
Di-2-ethylhexyl phthalate (DEHP)	mg/kg	30	N.D.	N.D.	N.D.	N.D.	N.D.	≤1000
Benzyl-n-butyl phthalate (BBP)	mg/kg	30	N.D.	N.D.	N.D.	N.D.	N.D.	≤1000
Di-n-butyl phthalate (DBP)	mg/kg	30	N.D.	N.D.	N.D.	N.D.	N.D.	≤1000
Di-iso-butyl phthalate (DIBP)	mg/kg	30	N.D.	N.D.	N.D.	N.D.	N.D.	≤1000
Conclusion	/	/	Pass	Pass	Pass	Pass	Pass	/

This document is issued by the Company subject to its General Conditions of service of service printed overleaf, available on request for electronic format documents, subject to terms and conditions for electronic documents is drawn to the limitation of liability indemnification and jurisdiction issues defined therein. any holder of this document is advised that information contained herein reflects the company's findings at the time of its intervention only and within the limits of client's instructions. if any, the company's sole responsibility is to its client and this document does not exonerate parties to a transaction from exercising all their rights and obligations under the transaction documents. this document cannot be reproduced except in full, without prior written approval of the company. any unauthorized alteration, forgery or falsification of the content or appearance of this document is unlawful and offenders may be prosecuted to the fullest extent of the law, unless otherwise stated the results shown in this test report refer only to the sample(s) tested.





TEST REPORT

REPORT No.: **DTIBW20210743-1R**

Date: 2021-04-29

Page 14 of 22

Item	Unit	MDL	Results					Limit
			42	43	44	46	48	
Di-2-ethylhexyl phthalate (DEHP)	mg/kg	30	N.D.	N.D.	N.D.	N.D.	N.D.	≤1000
Benzyl-n-butyl phthalate (BBP)	mg/kg	30	N.D.	N.D.	N.D.	N.D.	N.D.	≤1000
Di-n-butyl phthalate (DBP)	mg/kg	30	N.D.	N.D.	N.D.	N.D.	N.D.	≤1000
Di-iso-butyl phthalate (DIBP)	mg/kg	30	N.D.	N.D.	N.D.	N.D.	N.D.	≤1000
Conclusion	/	/	Pass	Pass	Pass	Pass	Pass	/

Item	Unit	MDL	Results					Limit
			49	50	51	52	54	
Di-2-ethylhexyl phthalate (DEHP)	mg/kg	30	N.D.	N.D.	N.D.	N.D.	N.D.	≤1000
Benzyl-n-butyl phthalate (BBP)	mg/kg	30	N.D.	N.D.	N.D.	N.D.	N.D.	≤1000
Di-n-butyl phthalate (DBP)	mg/kg	30	N.D.	N.D.	N.D.	N.D.	N.D.	≤1000
Di-iso-butyl phthalate (DIBP)	mg/kg	30	N.D.	N.D.	N.D.	N.D.	N.D.	≤1000
Conclusion	/	/	Pass	Pass	Pass	Pass	Pass	/

Item	Unit	MDL	Results					Limit
			55	57	58	60	61	
Di-2-ethylhexyl phthalate (DEHP)	mg/kg	30	N.D.	N.D.	N.D.	N.D.	N.D.	≤1000
Benzyl-n-butyl phthalate (BBP)	mg/kg	30	N.D.	N.D.	N.D.	N.D.	N.D.	≤1000
Di-n-butyl phthalate (DBP)	mg/kg	30	N.D.	N.D.	N.D.	N.D.	N.D.	≤1000
Di-iso-butyl phthalate (DIBP)	mg/kg	30	N.D.	N.D.	N.D.	N.D.	N.D.	≤1000
Conclusion	/	/	Pass	Pass	Pass	Pass	Pass	/

This document is issued by the Company subject to its General Conditions of service of service printed overleaf, available on request for electronic format documents, subject to terms and conditions for electronic documents is drawn to the limitation of liability indemnification and jurisdiction issues defined therein. Any holder of this document is advised that information contained herein reflects the company's findings at the time of its intervention only and within the limits of client's instructions. If any, the company's sole responsibility is to its client and this document does not exonerate parties to a transaction from exercising all their rights and obligations under the transaction documents. This document cannot be reproduced except in full, without prior written approval of the company. Any unauthorized alteration, forgery or falsification of the content or appearance of this document is unlawful and offenders may be prosecuted to the fullest extent of the law, unless otherwise stated the results shown in this test report refer only to the sample(s) tested.





TEST REPORT

REPORT No.: **DTIBW20210743-1R**

Date: 2021-04-29

Page 15 of 22

Item	Unit	MDL	Results					Limit
			62	63	64	66	69	
Di-2-ethylhexyl phthalate (DEHP)	mg/kg	30	N.D.	N.D.	N.D.	N.D.	N.D.	≤1000
Benzyl-n-butyl phthalate (BBP)	mg/kg	30	N.D.	N.D.	N.D.	N.D.	N.D.	≤1000
Di-n-butyl phthalate (DBP)	mg/kg	30	N.D.	N.D.	N.D.	N.D.	N.D.	≤1000
Di-iso-butyl phthalate (DIBP)	mg/kg	30	N.D.	N.D.	N.D.	N.D.	N.D.	≤1000
Conclusion	/	/	Pass	Pass	Pass	Pass	Pass	/

Item	Unit	MDL	Results					Limit
			70	74	75	77	79	
Di-2-ethylhexyl phthalate (DEHP)	mg/kg	30	N.D.	N.D.	N.D.	N.D.	N.D.	≤1000
Benzyl-n-butyl phthalate (BBP)	mg/kg	30	N.D.	N.D.	N.D.	N.D.	N.D.	≤1000
Di-n-butyl phthalate (DBP)	mg/kg	30	N.D.	N.D.	N.D.	N.D.	N.D.	≤1000
Di-iso-butyl phthalate (DIBP)	mg/kg	30	N.D.	N.D.	N.D.	N.D.	N.D.	≤1000
Conclusion	/	/	Pass	Pass	Pass	Pass	Pass	/

Item	Unit	MDL	Results					Limit
			80	81	82	83	85	
Di-2-ethylhexyl phthalate (DEHP)	mg/kg	30	N.D.	N.D.	N.D.	N.D.	N.D.	≤1000
Benzyl-n-butyl phthalate (BBP)	mg/kg	30	N.D.	N.D.	N.D.	N.D.	N.D.	≤1000
Di-n-butyl phthalate (DBP)	mg/kg	30	N.D.	N.D.	N.D.	N.D.	N.D.	≤1000
Di-iso-butyl phthalate (DIBP)	mg/kg	30	N.D.	N.D.	N.D.	N.D.	N.D.	≤1000
Conclusion	/	/	Pass	Pass	Pass	Pass	Pass	/

This document is issued by the Company subject to its General Conditions of service of service printed overleaf, available on request for electronic format documents, subject to terms and conditions for electronic documents is drawn to the limitation of liability indemnification and jurisdiction issues defined therein. any holder of this document is advised that information contained herein reflects the company's findings at the time of its intervention only and within the limits of client's instructions. if any, the company's sole responsibility is to its client and this document does not exonerate parties to a transaction from exercising all their rights and obligations under the transaction documents. this document cannot be reproduced except in full, without prior written approval of the company. any unauthorized alteration, forgery or falsification of the content or appearance of this document is unlawful and offenders may be prosecuted to the fullest extent of the law, unless otherwise stated the results shown in this test report refer only to the sample(s) tested.





TEST REPORT

REPORT No.: **DTIBW20210743-1R**

Date: 2021-04-29

Page 16 of 22

Item	Unit	MDL	Results					Limit
			86	87	88	91	93	
Di-2-ethylhexyl phthalate (DEHP)	mg/kg	30	N.D.	N.D.	N.D.	N.D.	N.D.	≤1000
Benzyl-n-butyl phthalate (BBP)	mg/kg	30	N.D.	N.D.	N.D.	N.D.	N.D.	≤1000
Di-n-butyl phthalate (DBP)	mg/kg	30	N.D.	N.D.	N.D.	N.D.	N.D.	≤1000
Di-iso-butyl phthalate (DIBP)	mg/kg	30	N.D.	N.D.	N.D.	N.D.	N.D.	≤1000
Conclusion	/	/	Pass	Pass	Pass	Pass	Pass	/

Item	Unit	MDL	Results					Limit
			95	97	98	99	101	
Di-2-ethylhexyl phthalate (DEHP)	mg/kg	30	N.D.	N.D.	N.D.	N.D.	N.D.	≤1000
Benzyl-n-butyl phthalate (BBP)	mg/kg	30	N.D.	N.D.	N.D.	N.D.	N.D.	≤1000
Di-n-butyl phthalate (DBP)	mg/kg	30	N.D.	N.D.	N.D.	N.D.	N.D.	≤1000
Di-iso-butyl phthalate (DIBP)	mg/kg	30	N.D.	N.D.	N.D.	N.D.	N.D.	≤1000
Conclusion	/	/	Pass	Pass	Pass	Pass	Pass	/

Item	Unit	MDL	Results		Limit
			102	103	
Di-2-ethylhexyl phthalate (DEHP)	mg/kg	30	N.D.	N.D.	≤1000
Benzyl-n-butyl phthalate (BBP)	mg/kg	30	N.D.	N.D.	≤1000
Di-n-butyl phthalate (DBP)	mg/kg	30	N.D.	N.D.	≤1000
Di-iso-butyl phthalate (DIBP)	mg/kg	30	N.D.	N.D.	≤1000
Conclusion	/	/	Pass	Pass	/

Note:

- N.D. = Not Detected or less than MDL
- mg/kg = ppm
- MDL = Method Detection Limit
- Decision rule: According to DTI-CX-39-2020 《Decision rule for conformity of the test results》.
- Flow chart appendix is included.
- Photo appendix is included.

This document is issued by the Company subject to its General Conditions of service of service printed overleaf, available on request for electronic format documents, subject to terms and conditions for electronic documents is drawn to the limitation of liability indemnification and jurisdiction issues defined therein. any holder of this document is advised that information contained herein reflects the company's findings at the time of its intervention only and within the limits of client's instructions. if any, the company's sole responsibility is to its client and this document does not exonerate parties to a transaction from exercising all their rights and obligations under the transaction documents. this document cannot be reproduced except in full, without prior written approval of the company. any unauthorized alteration, forgery or falsification of the content or appearance of this document is unlawful and offenders may be prosecuted to the fullest extent of the law, unless otherwise stated the results shown in this test report refer only to the sample(s) tested.

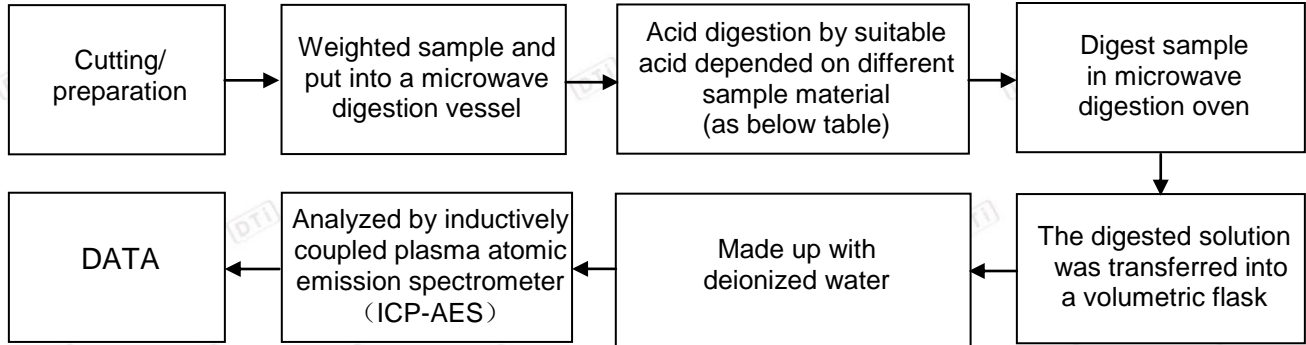


Appendix I

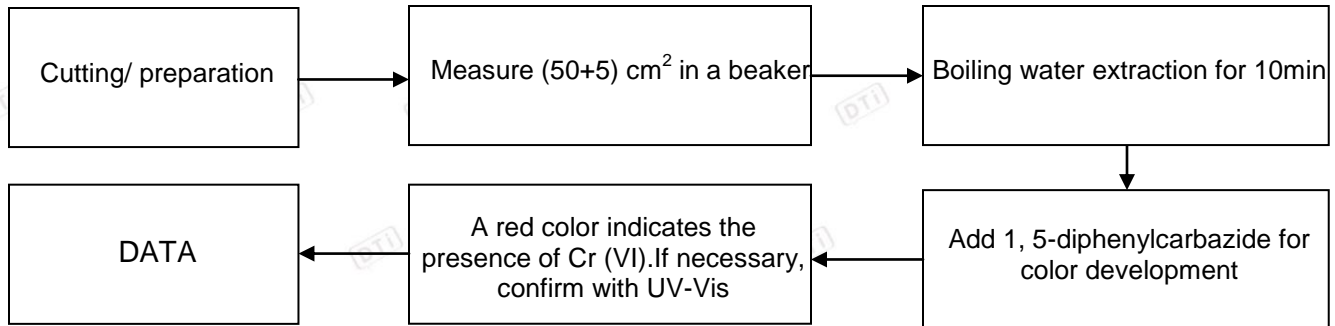
Test Flow chart

1. Test Flowchart for Cd / Pb /Hg content

These samples were dissolved totally by pre-conditioning method according to below flow chart.



2. Test Flowchart for Cr⁶⁺ content (Metal material)





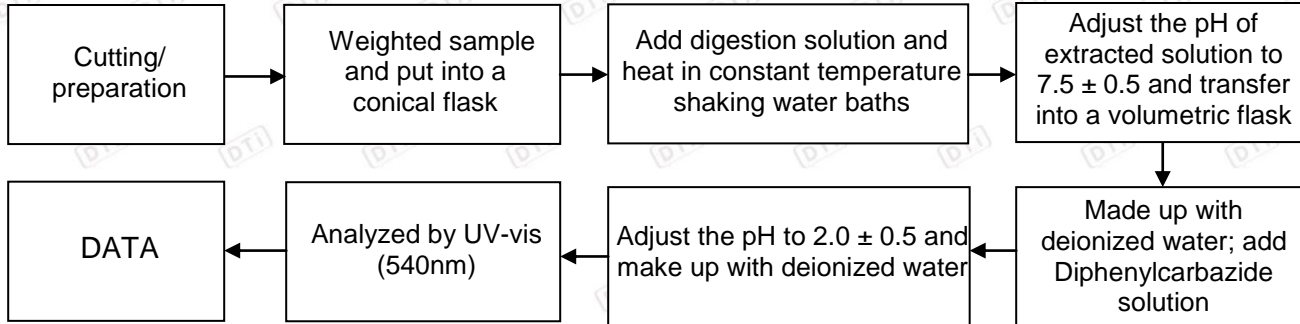
TEST REPORT

REPORT No.: **DTIBW20210743-1R**

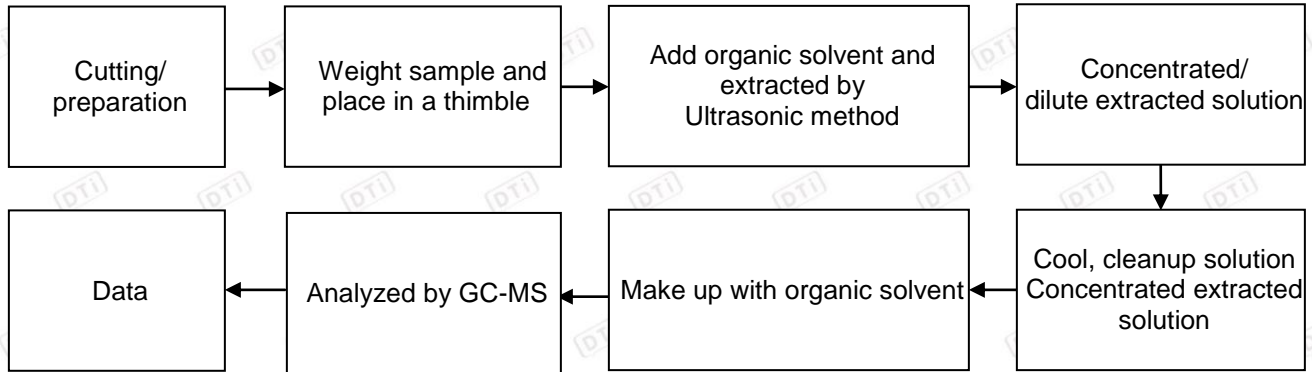
Date: 2021-04-29

Page 18 of 22

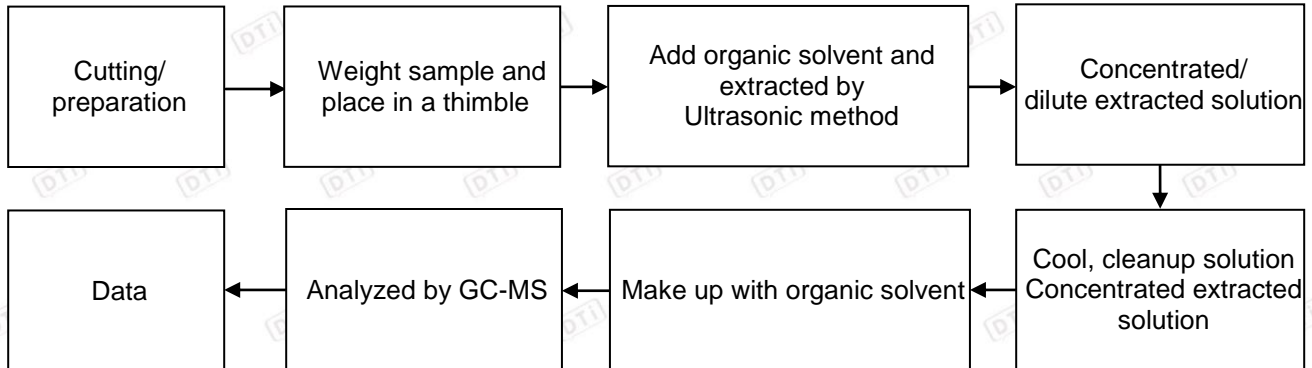
3. Test Flowchart for Cr⁶⁺ content (Non-metal material)



4. Test Flowchart for PBBs & PBDEs content



5. Test Flowchart for DEHP, BBP, DBP & DIBP content



This document is issued by the Company subject to its General Conditions of service of service printed overleaf, available on request for electronic format documents, subject to terms and conditions for electronic documents is drawn to the limitation of liability indemnification and jurisdiction issues defined therein. any holder of this document is advised that information contained herein reflects the company's findings at the time of its intervention only and within the limits of client's instructions. if any, the company's sole responsibility is to its client and this document does not exonerate parties to a transaction from exercising all their rights and obligations under the transaction documents. this document cannot be reproduced except in full, without prior written approval of the company. any unauthorized alteration, forgery or falsification of the content or appearance of this document is unlawful and offenders may be prosecuted to the fullest extent of the law, unless otherwise stated the results shown in this test report refer only to the sample(s) tested.





TEST REPORT

REPORT No.: **DTIBW20210743-1R**

Date: 2021-04-29

Page 19 of 22

Table:

Sample material	Digestion Acid
Steel, copper, aluminum, solder	Aqua regia, HNO ₃ , HCl, HF, H ₂ O ₂
Glass	HNO ₃ /HF
Gold, platinum, palladium, ceramic	Aqua regia
Silver	HNO ₃
Plastic	H ₂ SO ₄ , H ₂ O ₂ , HNO ₃ , HCl
Others	Any acid to total digestion

This document is issued by the Company subject to its General Conditions of service of service printed overleaf, available on request for electronic format documents, subject to terms and conditions for electronic documents is drawn to the limitation of liability indemnification and jurisdiction issues defined therein. Any holder of this document is advised that information contained herein reflects the company's findings at the time of its intervention only and within the limits of client's instructions. If any, the company's sole responsibility is to its client and this document does not exonerate parties to a transaction from exercising all their rights and obligations under the transaction documents. This document cannot be reproduced except in full, without prior written approval of the company. Any unauthorized alteration, forgery or falsification of the content or appearance of this document is unlawful and offenders may be prosecuted to the fullest extent of the law unless otherwise stated the results shown in this test report refer only to the sample(s) tested.



Shenzhen Deesev Testing International Corp.
 深圳市德泽威技术检测有限公司

9th Flr., Building B, Feiyang Science & Technology Park, Longchang Rd. No.8, Bao'an, Shenzhen, Guangdong, China
 中国广东省深圳市宝安区隆昌路8号飞扬科技园B座9楼
 Tel: +86-755-32936716 E-mail: DTI@deesev.cn



TEST REPORT

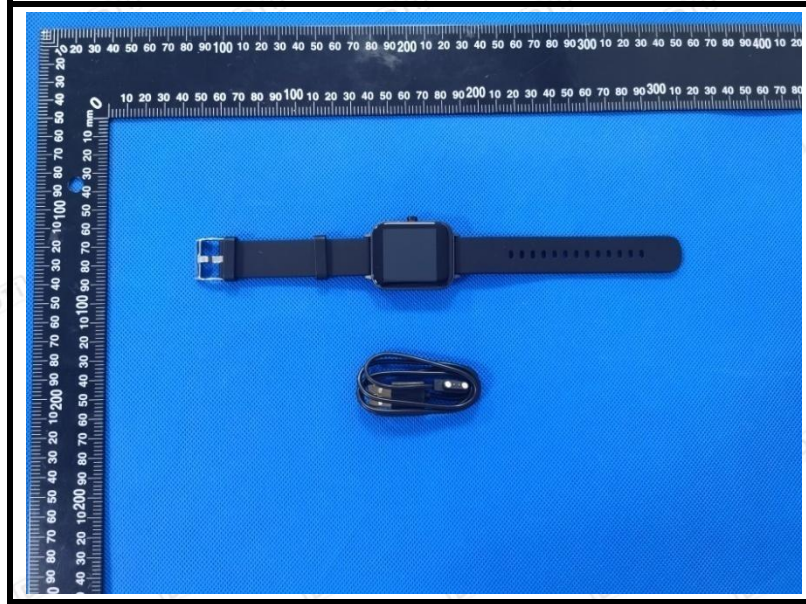
REPORT No.: **DTIBW20210743-1R**

Date: 2021-04-29

Page 20 of 22

Appendix II

Photograph of Sample

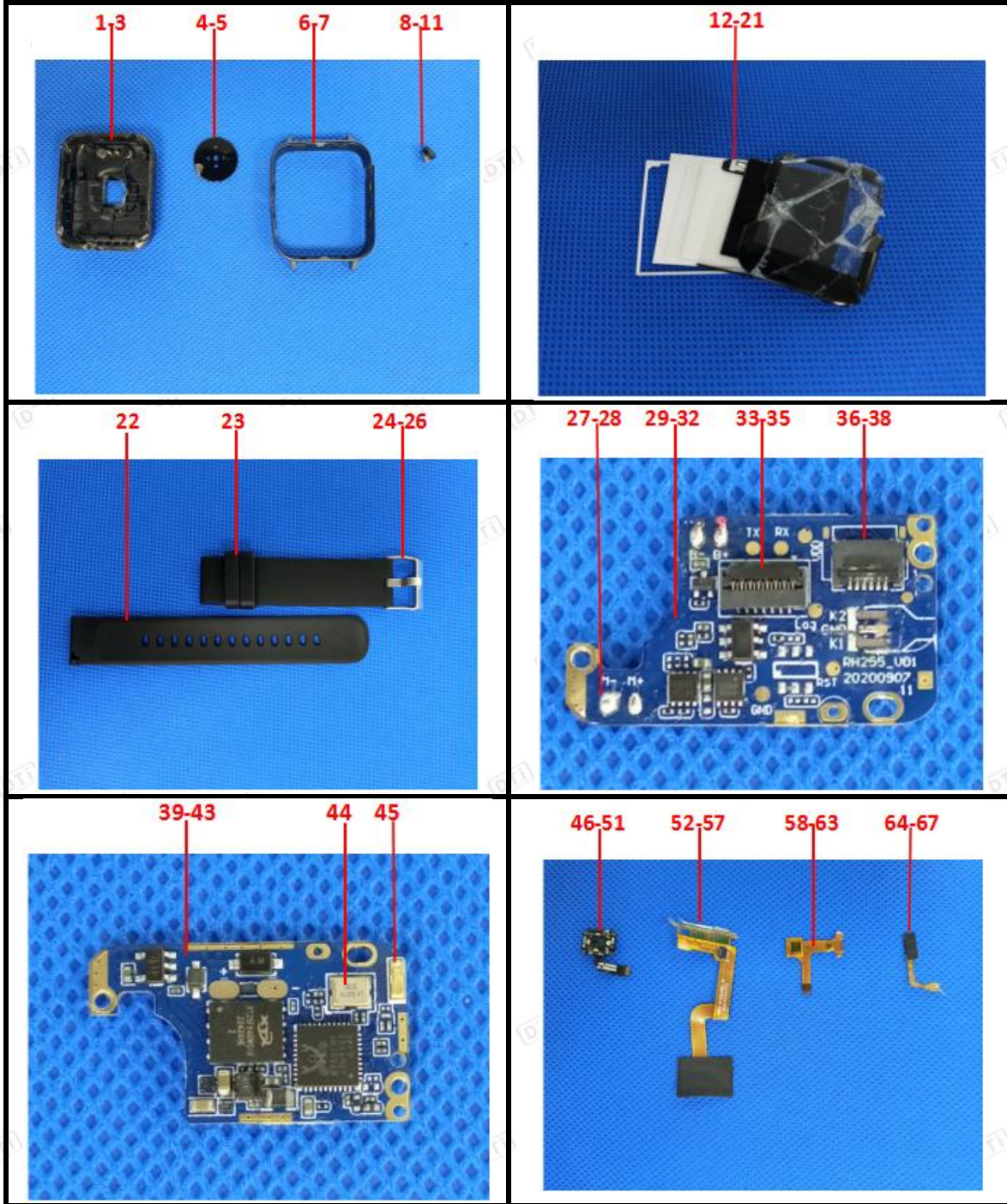


This document is issued by the Company subject to its General Conditions of service of service printed overleaf, available on request for electronic format documents, subject to terms and conditions for electronic documents is drawn to the limitation of liability indemnification and jurisdiction issues defined therein. Any holder of this document is advised that information contained herein reflects the company's findings at the time of its intervention only and within the limits of client's instructions. If any, the company's sole responsibility is to its client and this document does not exonerate parties to a transaction from exercising all their rights and obligations under the transaction documents. This document cannot be reproduced except in full, without prior written approval of the company. Any unauthorized alteration, forgery or falsification of the content or appearance of this document is unlawful and offenders may be prosecuted to the fullest extent of the law unless otherwise stated the results shown in this test report refer only to the sample(s) tested.

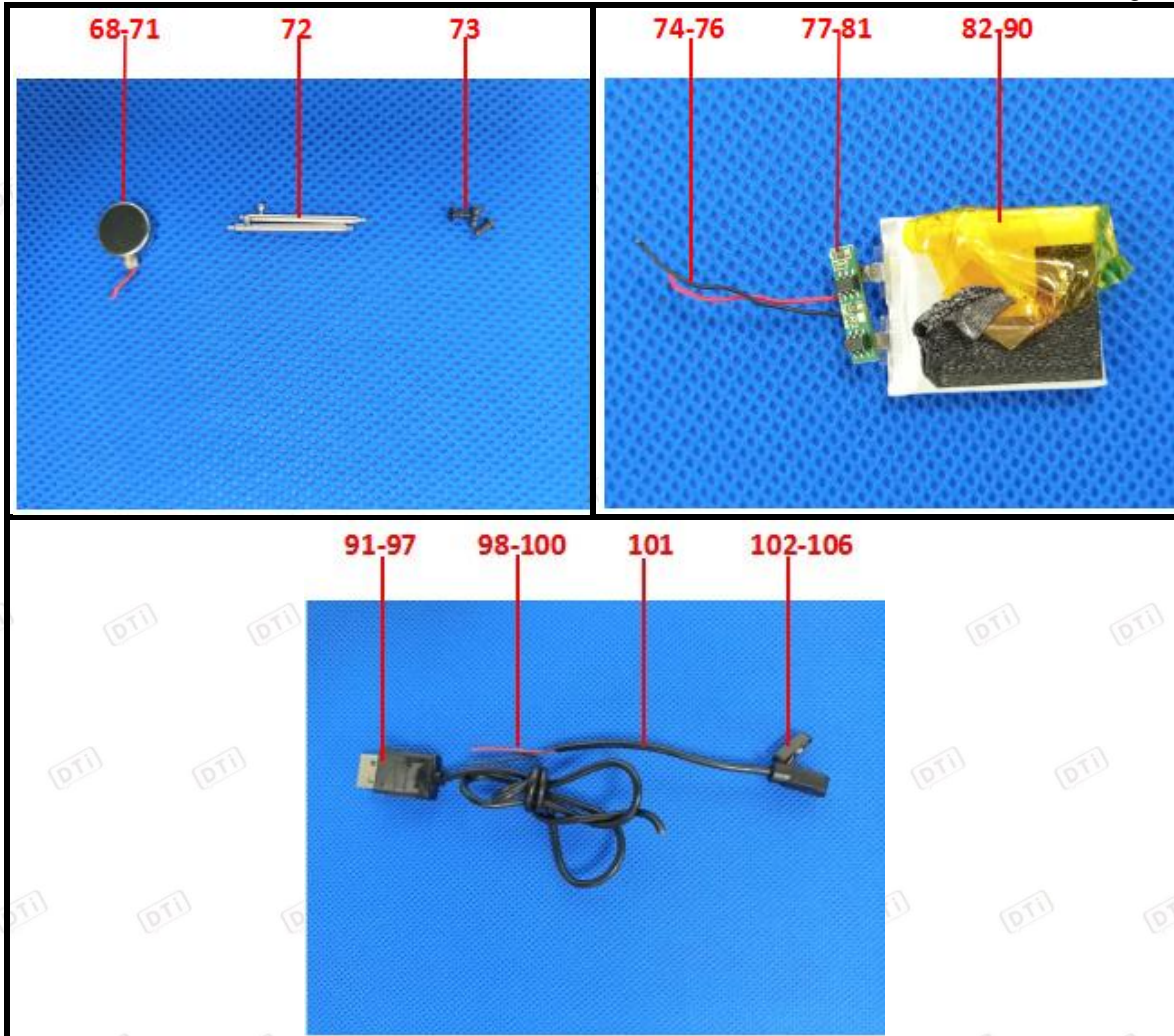


Shenzhen Deesev Testing International Corp.
深圳市德泽威技术检测有限公司

9th Flr., Building B, Feiyang Science & Technology Park, Longchang Rd. No.8, Bao'an, Shenzhen, Guangdong, China
中国广东省深圳市宝安区隆昌路8号飞扬科技园B座9楼
Tel: +86-755-32936716 E-mail: DTI@deesev.cn



This document is issued by the Company subject to its General Conditions of service of service printed overleaf, available on request for electronic format documents, subject to terms and conditions for electronic documents is drawn to the limitation of liability indemnification and jurisdiction issues defined therein. any holder of this document is advised that information contained herein reflects the company's findings at the time of its intervention only and within the limits of client's instructions. if any, the company's sole responsibility is to its client and this document does not exonerate parties to a transaction from exercising all their rights and obligations under the transaction documents. this document cannot be reproduced except in full, without prior written approval of the company. any unauthorized alteration, forgery or falsification of the content or appearance of this document is unlawful and offenders may be prosecuted to the fullest extent of the law. unless otherwise stated the results shown in this test report refer only to the sample(s) tested.



*** End of Report ***

This document is issued by the Company subject to its General Conditions of service of service printed overleaf, available on request for electronic format documents, subject to terms and conditions for electronic documents is drawn to the limitation of liability indemnification and jurisdiction issues defined therein. Any holder of this document is advised that information contained herein reflects the company's findings at the time of its intervention only and within the limits of client's instructions. If any, the company's sole responsibility is to its client and this document does not exonerate parties to a transaction from exercising all their rights and obligations under the transaction documents. This document cannot be reproduced except in full, without prior written approval of the company. Any unauthorized alteration, forgery or falsification of the content or appearance of this document is unlawful and offenders may be prosecuted to the fullest extent of the law, unless otherwise stated the results shown in this test report refer only to the sample(s) tested.